

What to expect when you come to Freedom Forest School

When you first come to Freedom Forest school we understand that it can be a little overwhelming coming in to a new setting not knowing what to expect. So we have put together this information for you to have a look at before you come so you know the layout of the site and a little of what to expect when you get here.

Freedom Forest School is run by Emma and Claire. We are both level 3 forest school practitioners, forest school first aiders and are both have DBS checks.



One of us will welcome you to our site, show you around and explain the site boundaries (see map) and the 3 forest school rules.

Take care of yourself

Take care of each other

Take care of Nature

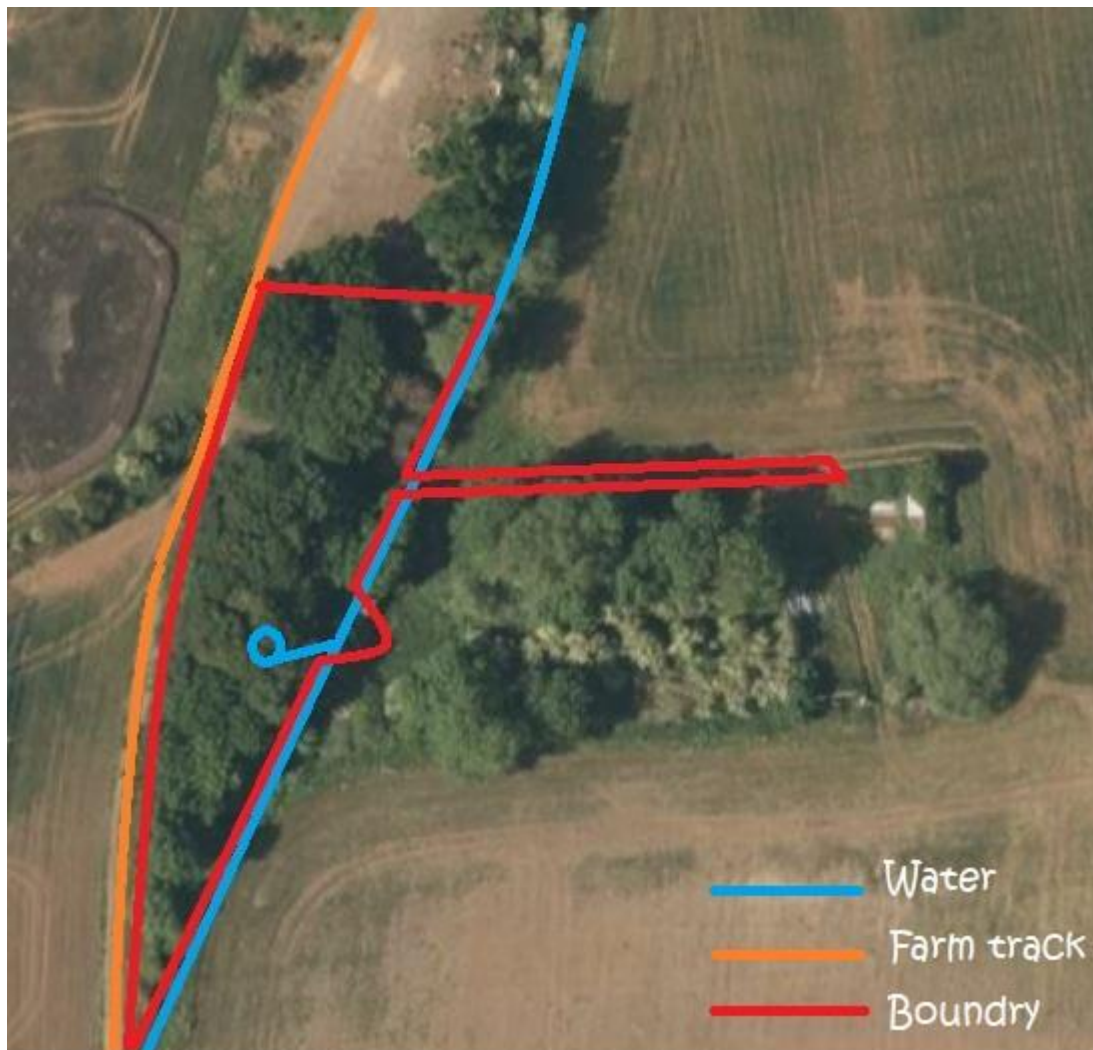
Freedom Forest School is based on a working farm, sometimes there are tractors or other vehicles driving down the track next to our site. It is important that you stay within the site boundaries.

After you have parked in our car park you will need to make sure you have the correct clothing on. Please see the 'what to wear to forest school' section. We recommend long sleeved t shirts, long trousers, and wellies to protect you from insect bites, stings from plants and scratches from brambles and sticks. The forest floor is quite uneven and there are sticks roots and other things you could trip on, so you just need to take a little more care when you move around the site.

As some point in most sessions we have a little fire, to toast marshmallows. When you are in the fire circle you must take extra care. Emma or Claire will make sure that the fire circle is safe for you.

We are lucky to have a little stream running through the site, in certain places marked on the map you are more than welcome to play in the stream. There is also a natural spring contained by a barrier. When you visit this you must go with a friend or adult.

There is a track that runs through the middle of forest school, if you need to go to the toilet while you are on site this track will offer you some privacy, we will show you where you can go for a wild wee. You must either go with your adult or tell Emma or Claire before you go up the track.



It is our aim that when you come here you are free to explore and choose your activities whilst feeling supported by us and whoever comes with you (if an adult is to stay).



From the car park



The entrance



Our shelter and fire pit



View down the site, stream on the left, farm track.



The natural spring, where we collect water for the mud kitchen. This is the area marked by the blue circle on the map.



The mud kitchen and swing.



View up the site of the shelter, farm track on the left, stream to the right.